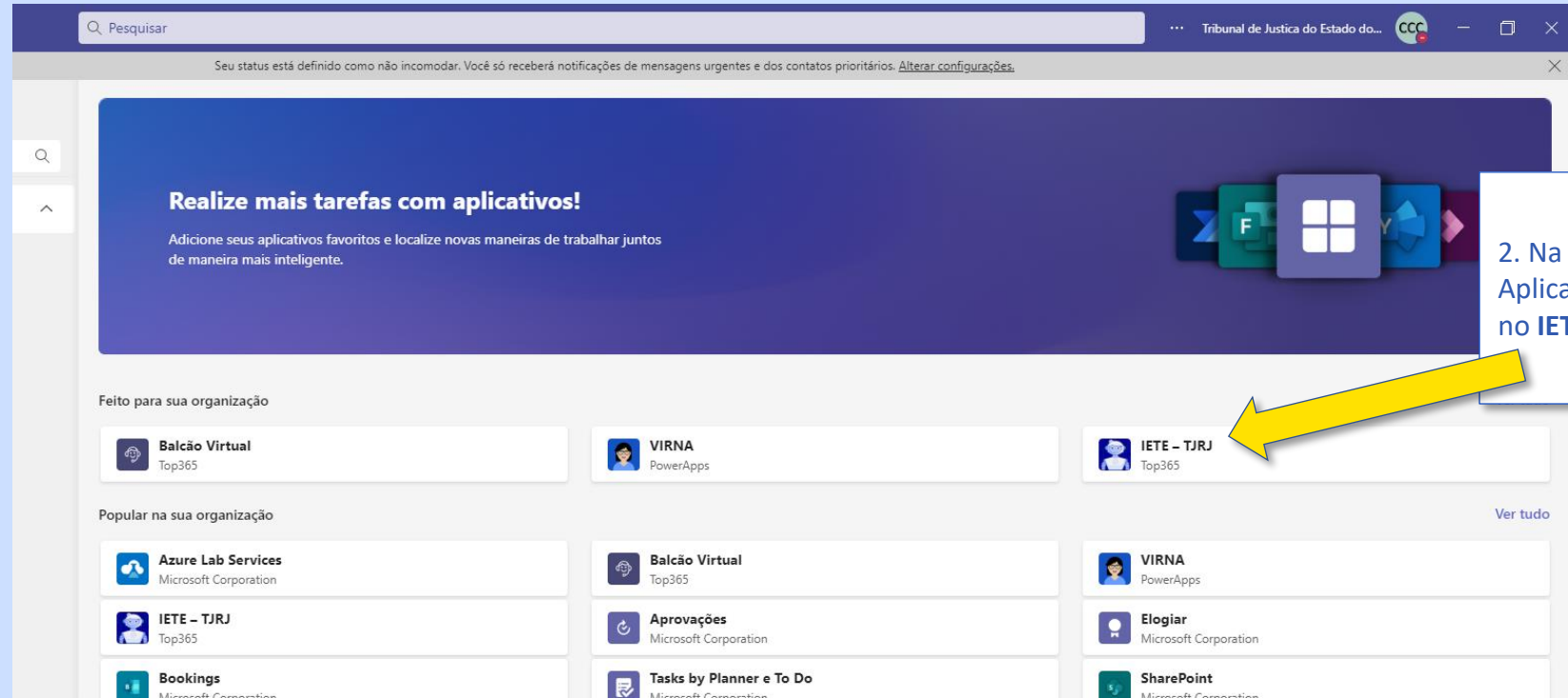
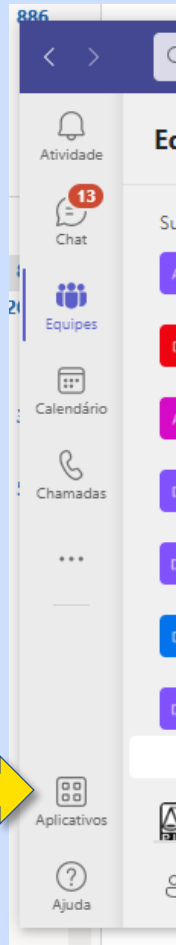




## Instalando o aplicativo

1. Abra o Teams e clique no ícone **Aplicativos** na parte inferior do menu à esquerda.



2. Na tela de Aplicativos, clique no **IETE-TJRJ**

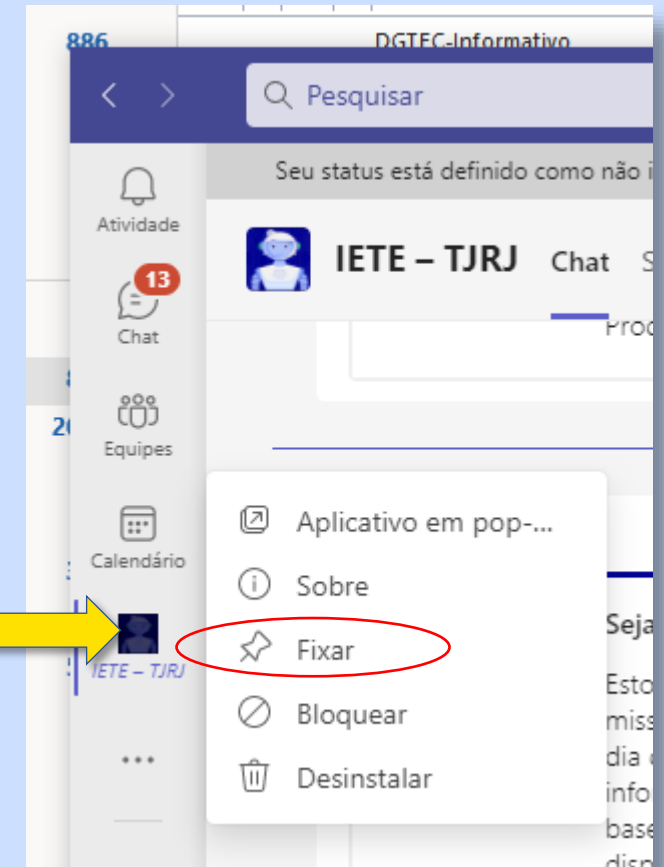


## Instalando o aplicativo

3. Clique em Adicionar



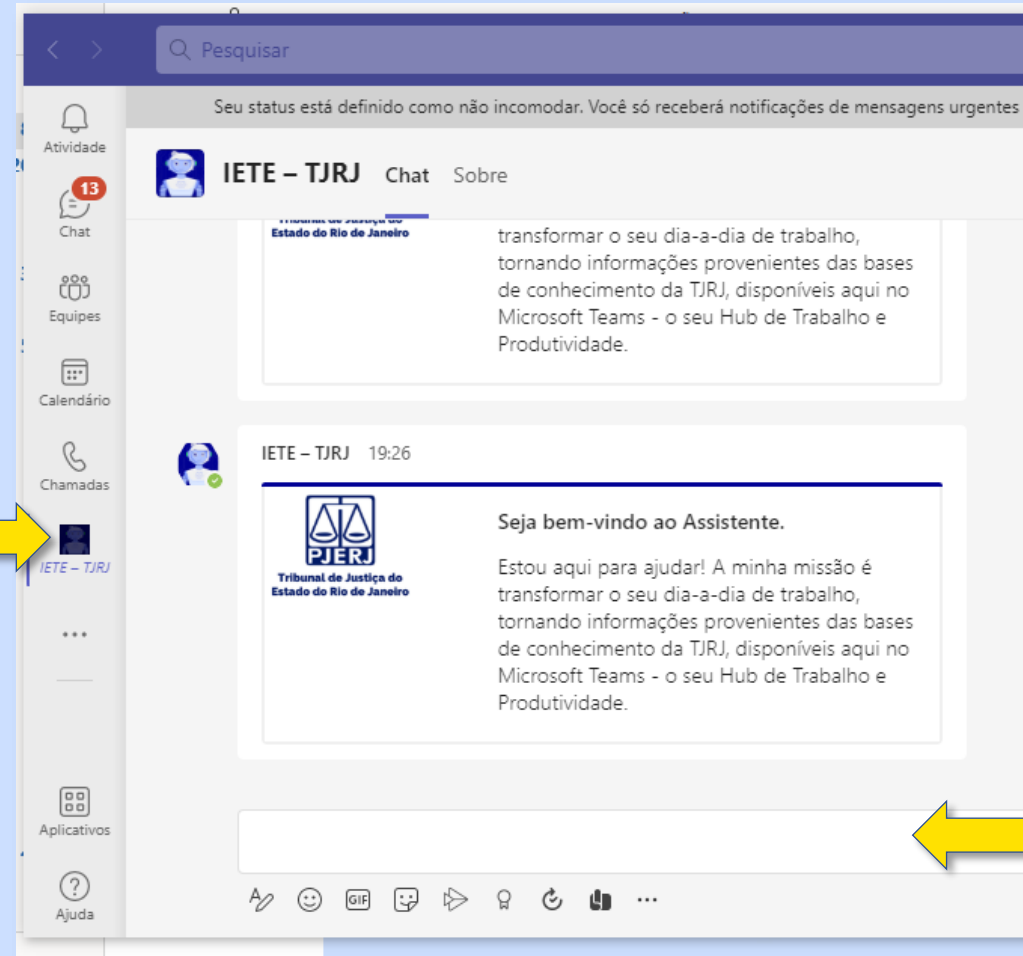
4. Clique com botão direito do mouse no ícone do IETE-TJRJ. Em seguida clique em Fixar





## Executando o aplicativo

5. Para usar, clique no aplicativo IETE-TJRJ



6. Use este campo para enviar sua pergunta

