



PODER JUDICIÁRIO
ESTADO DO RIO DE JANEIRO

**RESUMO DO DEMONSTRATIVO DA DESPESA COM PESSOAL
TRIBUNAIS DE JUSTIÇA DOS ESTADOS**

**SECRETARIA-GERAL DE PLANEJAMENTO, COORDENAÇÃO E FINANÇAS
ASSESSORIA TÉCNICA**

3º Quadrimestre - 2022

TRIBUNAL DE JUSTIÇA DO ESTADO DO RIO DE JANEIRO

RESUMO DO DEMONSTRATIVO DA DESPESA COM PESSOAL 2022

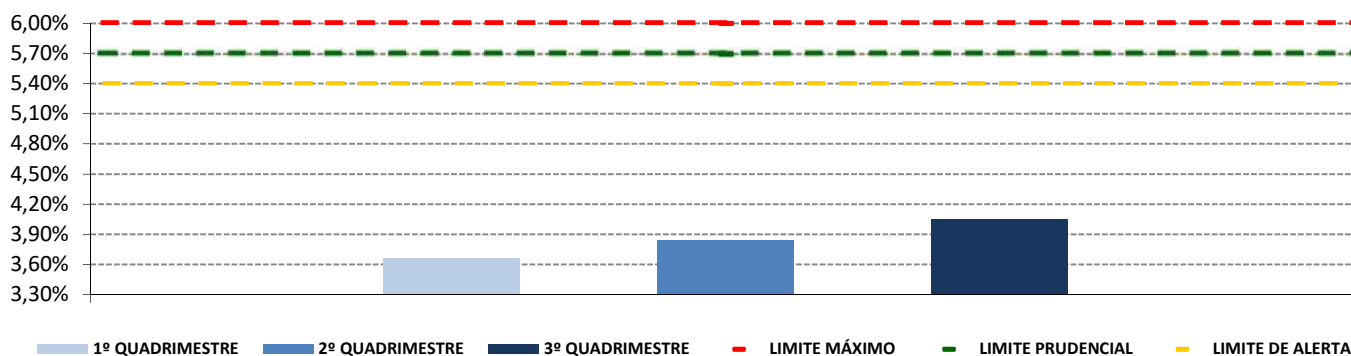
Valores em R\$

1º QUADRIMESTRE - MAIO/2021 A ABRIL/2022	
Receita Corrente Líquida (RCL)	91.067.422.329
Despesa Líquida com Pessoal (DLP)	3.333.394.018
% sobre a RCL	3,66%

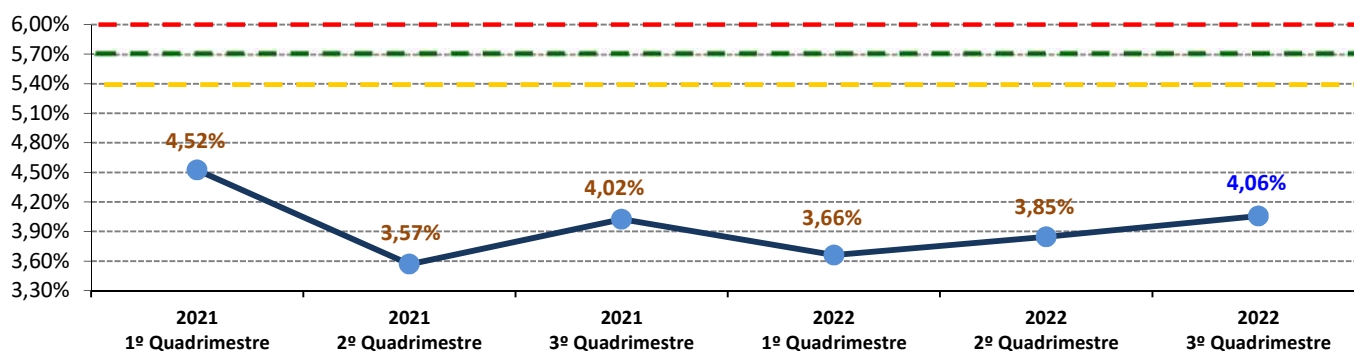
2º QUADRIMESTRE - SET/2021 A AGO/2022	
Receita Corrente Líquida (RCL)	89.303.759.557
Despesa Líquida com Pessoal (DLP)	3.434.433.709
% sobre a RCL	3,85%

3º QUADRIMESTRE - JAN/2022 A DEZ/2022	
Receita Corrente Líquida (RCL)	89.631.905.200
Despesa Líquida com Pessoal (DLP)	3.635.905.899
% sobre a RCL	4,06%

TJRJ- % de Gastos com Pessoal (DLP/RCL) por Quadrimestre - 2022



TJRJ - Evolução do % de Gastos com Pessoal (DLP/RCL) por Quadrimestre - 2021/2022



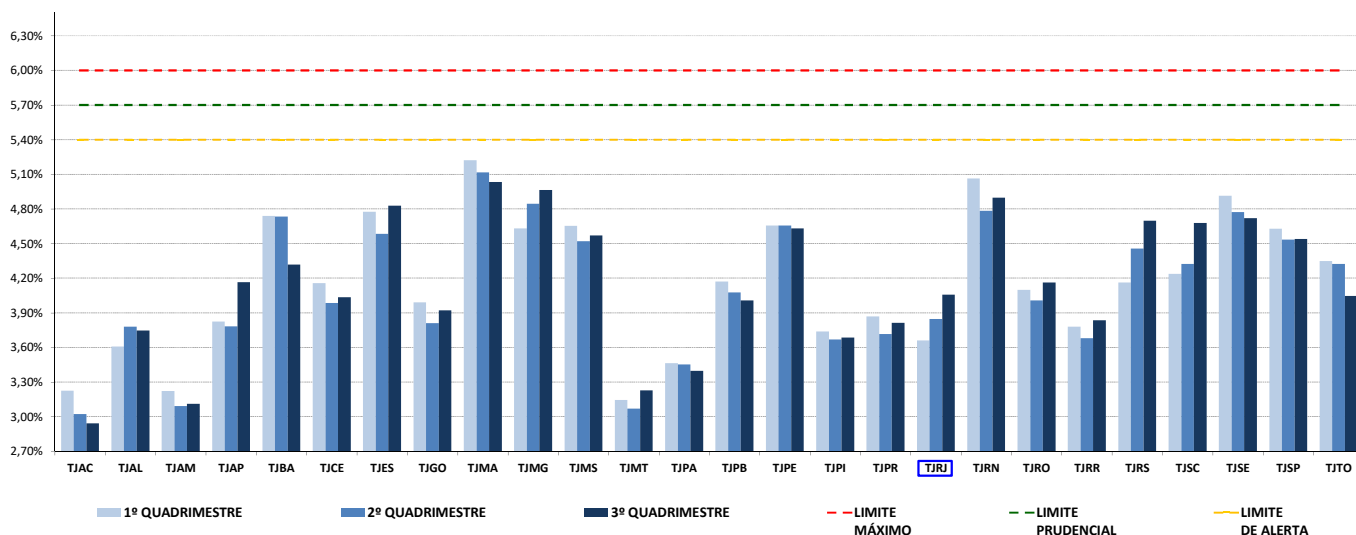
TRIBUNAIS DE JUSTIÇA DOS ESTADOS

RECEITA CORRENTE LÍQUIDA (RCL), DESPESA LÍQUIDA COM PESSOAL (DLP) E PERCENTUAL DE GASTOS COM PESSOAL (DLP/RCL) 2022

Valores em R\$

2022	1º QUADRIMESTRE			2º QUADRIMESTRE			3º QUADRIMESTRE		
	TJ ESTADUAIS	RCL	DLP	% (DLP/RCL)	RCL	DLP	% (DLP/RCL)	RCL	DLP
TJAC	7.109.448.697	229.218.314	3,22%	7.595.084.219	229.488.867	3,02%	7.968.319.334	234.433.017	2,94%
TJAL	13.215.677.848	476.958.649	3,61%	12.863.753.699	486.290.520	3,78%	13.148.926.097	492.740.999	3,75%
TJAM	20.107.463.850	647.949.451	3,22%	21.752.400.640	672.749.010	3,09%	22.412.466.141	697.045.598	3,11%
TJAP	6.959.176.964	266.183.315	3,82%	7.402.045.609	280.063.042	3,78%	7.242.022.583	301.652.377	4,17%
TJBA	48.400.513.040	2.293.975.648	4,74%	49.779.267.370	2.356.663.721	4,73%	55.298.488.312	2.387.727.159	4,32%
TJCE	26.752.128.923	1.112.255.483	4,16%	28.933.552.895	1.152.613.570	3,98%	30.275.603.634	1.221.166.993	4,03%
TJES	20.216.235.836	965.367.087	4,78%	21.347.563.798	978.632.189	4,58%	21.193.712.380	1.023.262.813	4,83%
TJGO	33.364.107.922	1.330.954.628	3,99%	36.407.114.781	1.387.127.103	3,81%	37.199.050.718	1.458.446.724	3,92%
TJMA	19.428.550.014	1.014.356.858	5,22%	20.895.914.836	1.069.266.627	5,12%	22.134.638.694	1.114.359.180	5,03%
TJMG	86.390.487.456	4.001.864.296	4,63%	89.028.638.465	4.313.307.475	4,84%	91.403.876.913	4.536.972.487	4,96%
TJMS	16.656.387.831	774.934.751	4,65%	17.828.413.755	805.966.519	4,52%	18.352.650.109	838.880.114	4,57%
TJMT	26.601.005.758	836.414.687	3,14%	28.960.864.356	888.783.182	3,07%	29.286.462.391	945.250.597	3,23%
TJPA	29.778.296.871	1.031.279.758	3,46%	31.745.902.691	1.095.861.810	3,45%	34.198.301.843	1.161.391.044	3,40%
TJPB	14.084.129.376	587.575.588	4,17%	14.988.715.906	611.106.033	4,08%	15.758.982.577	631.337.206	4,01%
TJPE	32.998.110.472	1.536.077.201	4,66%	32.998.110.472	1.536.077.201	4,66%	36.697.903.275	1.699.268.765	4,63%
TJPI	12.307.118.461	459.961.755	3,74%	13.140.628.144	482.207.193	3,67%	13.495.207.706	497.316.610	3,69%
TJPR	51.814.807.272	2.004.995.272	3,87%	54.880.594.911	2.039.227.409	3,72%	55.743.548.179	2.125.184.552	3,81%
TJRJ	91.067.422.329	3.333.394.018	3,66%	89.303.759.557	3.434.433.709	3,85%	89.631.905.200	3.635.905.899	4,06%
TJRN	12.897.175.863	652.947.235	5,06%	13.985.034.589	668.918.065	4,78%	14.229.966.853	696.928.811	4,90%
TJRO	10.861.440.918	445.092.560	4,10%	11.552.327.893	463.033.831	4,01%	11.597.477.036	482.676.335	4,16%
TJRR	5.718.594.346	216.094.039	3,78%	6.281.173.379	231.166.952	3,68%	6.374.313.024	244.466.490	3,84%
TJRS	54.106.542.878	2.251.980.367	4,16%	52.027.186.597	2.318.847.565	4,46%	50.491.712.053	2.371.706.586	4,70%
TJSC	34.230.216.285	1.450.513.447	4,24%	36.204.148.197	1.565.170.563	4,32%	38.223.585.411	1.788.331.895	4,68%
TJSE	10.213.511.224	501.951.737	4,91%	10.962.210.990	523.270.094	4,77%	11.266.509.996	531.830.332	4,72%
TJSP	209.637.257.263	9.701.862.975	4,63%	221.858.002.734	10.057.527.013	4,53%	230.734.876.013	10.475.446.728	4,54%
TJTO	10.778.433.815	468.684.664	4,35%	11.430.272.553	494.014.260	4,32%	12.104.467.859	489.693.874	4,05%

TJ Estados - % de Gastos com Pessoal (DLP/RCL) 1º, 2º e 3º Quadrimestres- 2022



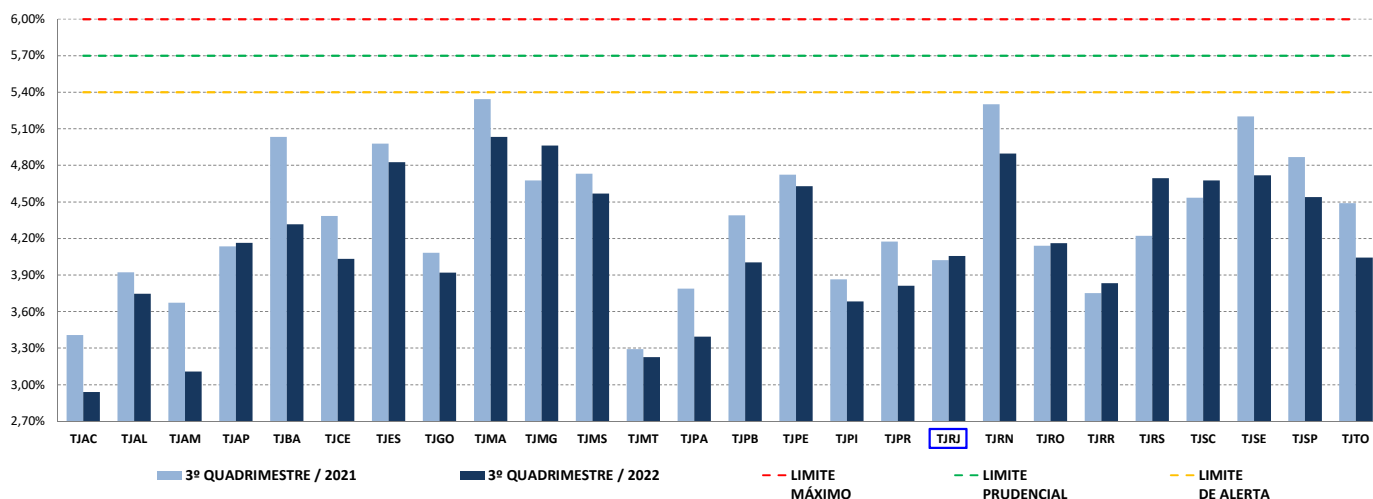
TRIBUNAIS DE JUSTIÇA DOS ESTADOS

VARIÇÃO DA RECEITA CORRENTE LÍQUIDA (RCL), DESPESA LÍQUIDA COM PESSOAL (DLP) E PERCENTUAL DE GASTOS COM PESSOAL (DLP/RCL) 2021 / 2022

Valores em R\$

QUAD./ANO	3º QUADRIMESTRE / 2021			3º QUADRIMESTRE / 2022			% DE VARIAÇÃO ENTRE 2021 E 2022			
TJ ESTADUAIS	RCL	DLP	% (DLP/RCL)	RCL	DLP	% (DLP/RCL)	RCL	DLP		
TJAC	6.651.119.664	226.652.490	3,41%	7.968.319.334	234.433.017	2,94%	19,80%	↑	3,43%	↑
TJAL	12.461.508.202	488.979.229	3,92%	13.148.926.097	492.740.999	3,75%	5,52%	↑	0,77%	↑
TJAM	18.992.933.783	697.888.404	3,67%	22.412.466.141	697.045.598	3,11%	18,00%	↑	-0,12%	↓
TJAP	6.468.057.654	267.574.895	4,14%	7.242.022.583	301.652.377	4,17%	11,97%	↑	12,74%	↑
TJBA	45.333.569.085	2.282.560.977	5,04%	55.298.488.312	2.387.727.159	4,32%	21,98%	↑	4,61%	↑
TJCE	25.061.058.356	1.098.960.506	4,39%	30.275.603.634	1.221.166.993	4,03%	20,81%	↑	11,12%	↑
TJES	18.772.686.661	934.785.562	4,98%	21.193.712.380	1.023.262.813	4,83%	12,90%	↑	9,46%	↑
TJGO	31.539.191.642	1.288.282.443	4,08%	37.199.050.718	1.458.446.724	3,92%	17,95%	↑	13,21%	↑
TJMA	18.237.741.792	974.900.184	5,35%	22.134.638.694	1.114.359.180	5,03%	21,37%	↑	14,30%	↑
TJMG	82.432.561.596	3.855.868.368	4,68%	91.403.876.913	4.536.972.487	4,96%	10,88%	↑	17,66%	↑
TJMS	15.797.113.944	747.657.474	4,73%	18.352.650.109	838.880.114	4,57%	16,18%	↑	12,20%	↑
TJMT	24.483.729.632	806.192.409	3,29%	29.286.462.391	945.250.597	3,23%	19,62%	↑	17,25%	↑
TJPA	26.923.897.007	1.020.127.668	3,79%	34.198.301.843	1.161.391.044	3,40%	27,02%	↑	13,85%	↑
TJPB	13.032.451.565	572.255.993	4,39%	15.758.982.577	631.337.206	4,01%	20,92%	↑	10,32%	↑
TJPE	31.335.146.156	1.480.856.636	4,73%	36.697.903.275	1.699.268.765	4,63%	17,11%	↑	14,75%	↑
TJPI	11.411.172.117	441.235.587	3,87%	13.495.207.706	497.316.610	3,69%	18,26%	↑	12,71%	↑
TJPR	47.808.298.302	1.996.905.247	4,18%	55.743.548.179	2.125.184.552	3,81%	16,60%	↑	6,42%	↑
TJRJ	82.455.459.588	3.317.640.194	4,02%	89.631.905.200	3.635.905.899	4,06%	8,70%	↑	9,59%	↑
TJRN	12.199.921.435	646.908.433	5,30%	14.229.966.853	696.928.811	4,90%	16,64%	↑	7,73%	↑
TJRO	9.885.765.456	409.396.715	4,14%	11.597.477.036	482.676.335	4,16%	17,31%	↑	17,90%	↑
TJRR	5.538.112.946	207.785.574	3,75%	6.374.313.024	244.466.490	3,84%	15,10%	↑	17,65%	↑
TJRS	53.790.325.445	2.271.721.622	4,22%	50.491.712.053	2.371.706.586	4,70%	-6,13%	↓	4,40%	↑
TJSC	31.015.355.302	1.407.132.177	4,54%	38.223.585.411	1.788.331.895	4,68%	23,24%	↑	27,09%	↑
TJSE	9.611.038.126	500.052.627	5,20%	11.266.509.996	531.830.332	4,72%	17,22%	↑	6,35%	↑
TJSP	196.835.991.677	9.586.409.551	4,87%	230.734.876.013	10.475.446.728	4,54%	17,22%	↑	9,27%	↑
TJTO	10.052.110.448	451.494.005	4,49%	12.104.467.859	489.693.874	4,05%	20,42%	↑	8,46%	↑

TJ Estados - % de Gastos com Pessoal (DLP/RCL no 3º Quadrimestre - 2021/2022)



TRIBUNAIS DE JUSTIÇA DOS ESTADOS

RANKING DO PERCENTUAL DE GASTOS COM PESSOAL (DLP/RCL) POR QUADRIMESTRE / 2022

Valores em R\$

2022		3º QUADRIMESTRE / 2022				RANKING - 3º QUADRIMESTRE PERCENTUAL DE GASTOS COM PESSOAL (DLP/RCL)
▲ RANKING POR %		3º QUADRIMESTRE				
2º Quad./2022	3º Quad./2022	TJ ESTADUAIS	RCL	DLP	% (DLP/RCL)	
ORDEM	ORDEM					
1º	1º	TJMA	22.134.638.694	1.114.359.180	5,03%	TJMA 5,03%
2º	2º	TJMG	91.403.876.913	4.536.972.487	4,96%	TJMG 4,96%
3º	3º	TJRN	14.229.966.853	696.928.811	4,90%	TJRN 4,90%
7º	4º	TJES	21.193.712.380	1.023.262.813	4,83%	TJES 4,83%
4º	5º	TJSE	11.266.509.996	531.830.332	4,72%	TJSE 4,72%
10º	6º	TJRS	50.491.712.053	2.371.706.586	4,70%	TJRS 4,70%
11º	7º	TJSC	38.223.585.411	1.788.331.895	4,68%	TJSC 4,68%
6º	8º	TJPE	36.697.903.275	1.699.268.765	4,63%	TJPE 4,63%
9º	9º	TJMS	18.352.650.109	838.880.114	4,57%	TJMS 4,57%
8º	10º	TJSP	230.734.876.013	10.475.446.728	4,54%	TJSP 4,54%
5º	11º	TJBA	55.298.488.312	2.387.727.159	4,32%	TJBA 4,32%
18º	12º	TJAP	7.242.022.583	301.652.377	4,17%	TJAP 4,17%
14º	13º	TJRO	11.597.477.036	482.676.335	4,16%	TJRO 4,16%
16º	14º	TJRJ	89.631.905.200	3.635.905.899	4,06%	TJRJ 4,06%
12º	15º	TJTO	12.104.467.859	489.693.874	4,05%	TJTO 4,05%
15º	16º	TJCE	30.275.603.634	1.221.166.993	4,03%	TJCE 4,03%
13º	17º	TJPB	15.758.982.577	631.337.206	4,01%	TJPB 4,01%
17º	18º	TJGO	37.199.050.718	1.458.446.724	3,92%	TJGO 3,92%
21º	19º	TJRR	6.374.313.024	244.466.490	3,84%	TJRR 3,84%
20º	20º	TJPR	55.743.548.179	2.125.184.552	3,81%	TJPR 3,81%
19º	21º	TJAL	13.148.926.097	492.740.999	3,75%	TJAL 3,75%
22º	22º	TJPI	13.495.207.706	497.316.610	3,69%	TJPI 3,69%
23º	23º	TJPA	34.198.301.843	1.161.391.044	3,40%	TJPA 3,40%
25º	24º	TJMT	29.286.462.391	945.250.597	3,23%	TJMT 3,23%
24º	25º	TJAM	22.412.466.141	697.045.598	3,11%	TJAM 3,11%
26º	26º	TJAC	7.968.319.334	234.433.017	2,94%	TJAC 2,94%